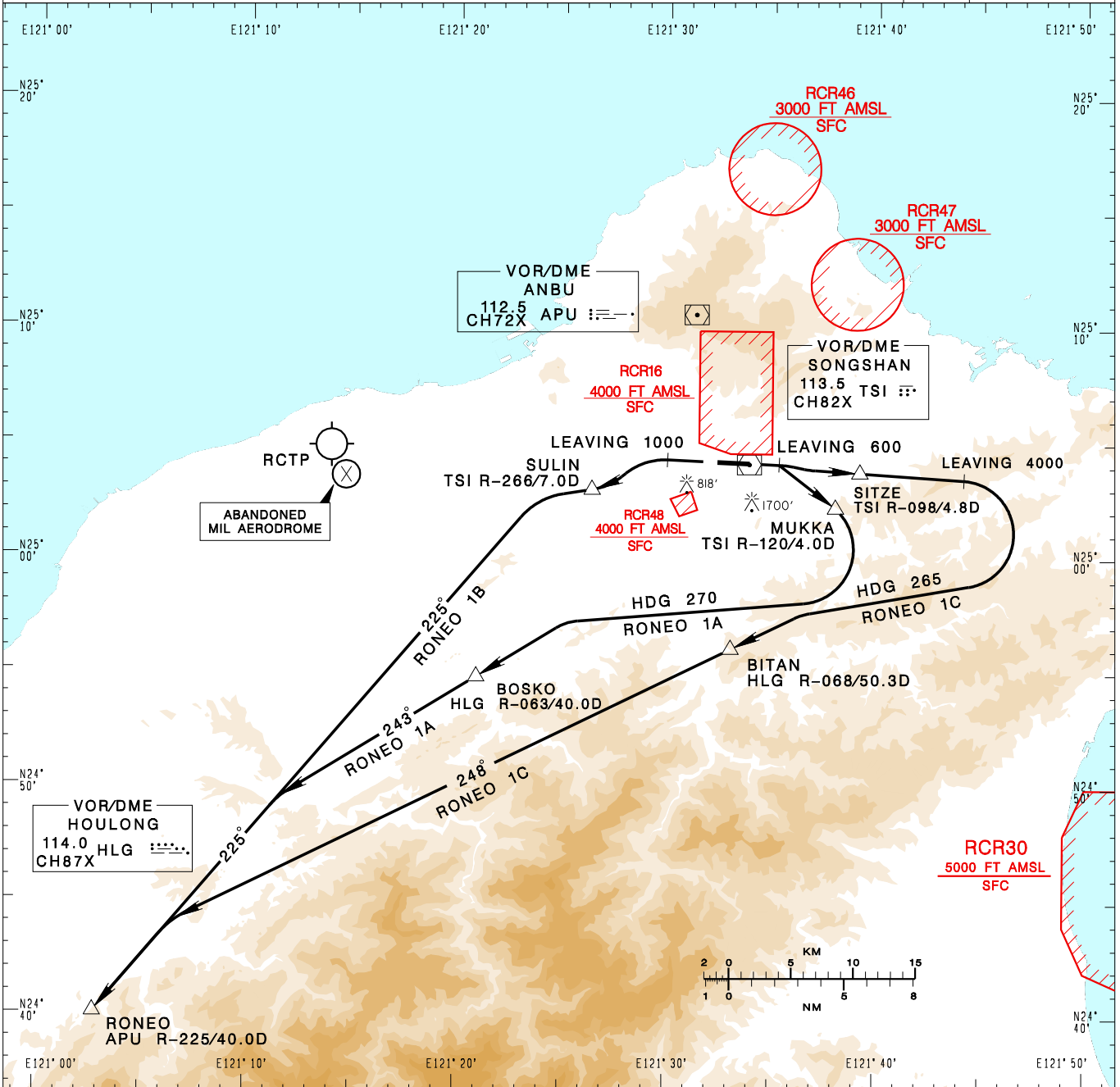


**臺北/松山機場**  
TAIPEI/SONGSHAN AD

RCSS SID  
RONEO 1A(RWY10)/RONEO 1C(RWY10)  
RONEO 1B(RWY28)

TAIPEI APP 119.7 119.6 125.1			SONGSHAN TWR 118.1		ATIS 127.4 341		
Apt Elev: 18'		Trans Level: FL130		Trans Alt: 11,000'			
BEARINGS ARE MAGNETIC; DISTANCES ARE NAUTICAL MILES; ELEVATIONS, HEIGHTS IN FEET							



CHANGES: NEW CHART

**RONEO ONE ALFA DEPARTURE**  
Climb on RWY HDG until 600ft, then track TSI R-120 to MUKKA, after passing MUKKA, turn right HDG 270 to intercept HLG R-063 to BOSKO, then continue HLG R-063 to intercept APU R-225 to RONEO.

**RONEO ONE BRAVO DEPARTURE**  
Climb on RWY HDG until 1000ft, then turn left to track TSI R-266 to SULIN, then continue TSI R-266 to intercept APU R-225 to RONEO.

**RONEO ONE CHARLIE DEPARTURE**  
Climb on RWY HDG until 600ft, then track TSI R-098 to SITZE, continue TSI R-098 until 4,000ft, then turn right HDG 265 to intercept HLG R-068 to BITAN, then continue HLG R-068 to intercept APU R-225 to RONEO.

**NOTE**

- RONEO 1A:**  
Minimum climb gradient required: 7.4%(450ft/NM) until MUKKA, then 5.0%(304ft/NM) until BOSKO.  
Speed restriction: MAX 230KT IAS until BOSKO.
- RONEO 1B:**  
Minimum climb gradient required: 7.4%(450ft/NM) until SULIN.  
Speed restriction: MAX 250KT IAS until SULIN.
- RONEO 1C:**  
Minimum climb gradient required: 7.0%(426ft/NM) until 4000ft.  
Speed Restriction: MAX 250KT IAS until BITAN.
- ATS surveillance required.
- Caution high terrain around airport.
- A 1700ft-high BLDG at 2.1NM south of THR 28.
- A 818ft-high BLDG at 2 NM SW of THR 10.